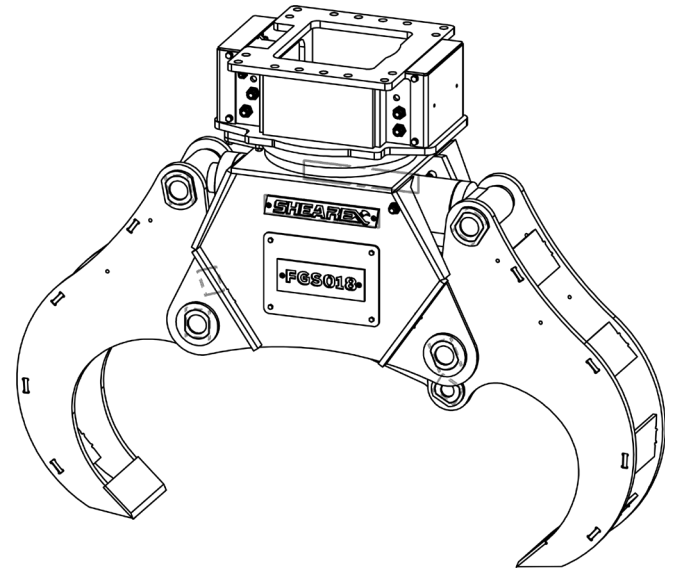


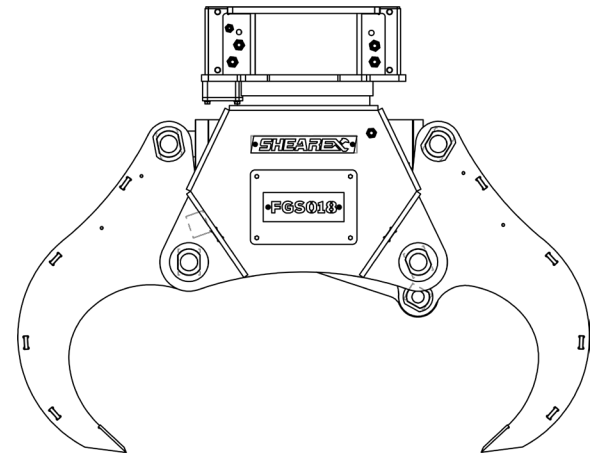
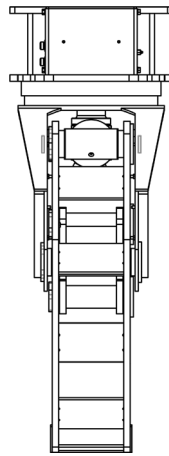
LOG SPLITTER GRAPPLE

FGS SERIES



IDEAL FOR
FORESTRY

Maximize your logging operations with this log splitter grapple by handling and splitting your logs at the same time.



SPECIFICATIONS

	Carrier	lbs (kg) Weight	in (mm) Opening	in (mm) Width	in (mm) Depth	PSI (bar) Pressure	(t) Force
FGS005	3t-5t	450 (204)	24 (610)	6 (152)	12 (305)	4,640 (320)	10
FGS007	6t-8t	670 (304)	32 (812)	8 (203)	18 (458)	4,650 (320)	15
FGS012	9t-13t	1,154 (524)	41.25 (1048)	10 (254)	20 (508)	4,650 (320)	25
FGS018	14t-21t	2,122 (964)	54.5 (1385)	12 (305)	28 (711)	5,000 (350)	35
FGS025	22t-30t	4,410 (2,000)	71 (1803)	16 (406)	35 (889)	5,000 (350)	50

The information is subject to change without notice.

sales@shearex.ca - 579-213-0350

325, rue de l'Église, Roxton Falls, QC J0H 1E0

